

Speed Meets Scale: atNorth
Powers High-Density
Infrastructure for QRT



Dedicated HPC infrastructure supports long-term growth for Qube Research Technologies

[Qube Research & Technologies](#) (QRT) is a global quantitative and systematic investment manager, operating in multiple asset classes across the world.

As compute requirements increased, the firm required greater capacity and made a strategic decision to build a dedicated HPC platform to support its next phase of growth.

High-Density HPC Built for Scale at ICE03

Following a competitive RFP process, QRT quickly identified the Nordics as the ideal location for its new infrastructure, driven by the region's abundant renewable energy availability, stable and competitive power pricing, and long-term scalability.

QRT turned to atNorth's award-winning ICE03 facility in Akureyri, Iceland, a purpose-built, high-density data center. QRT needed to deploy next-

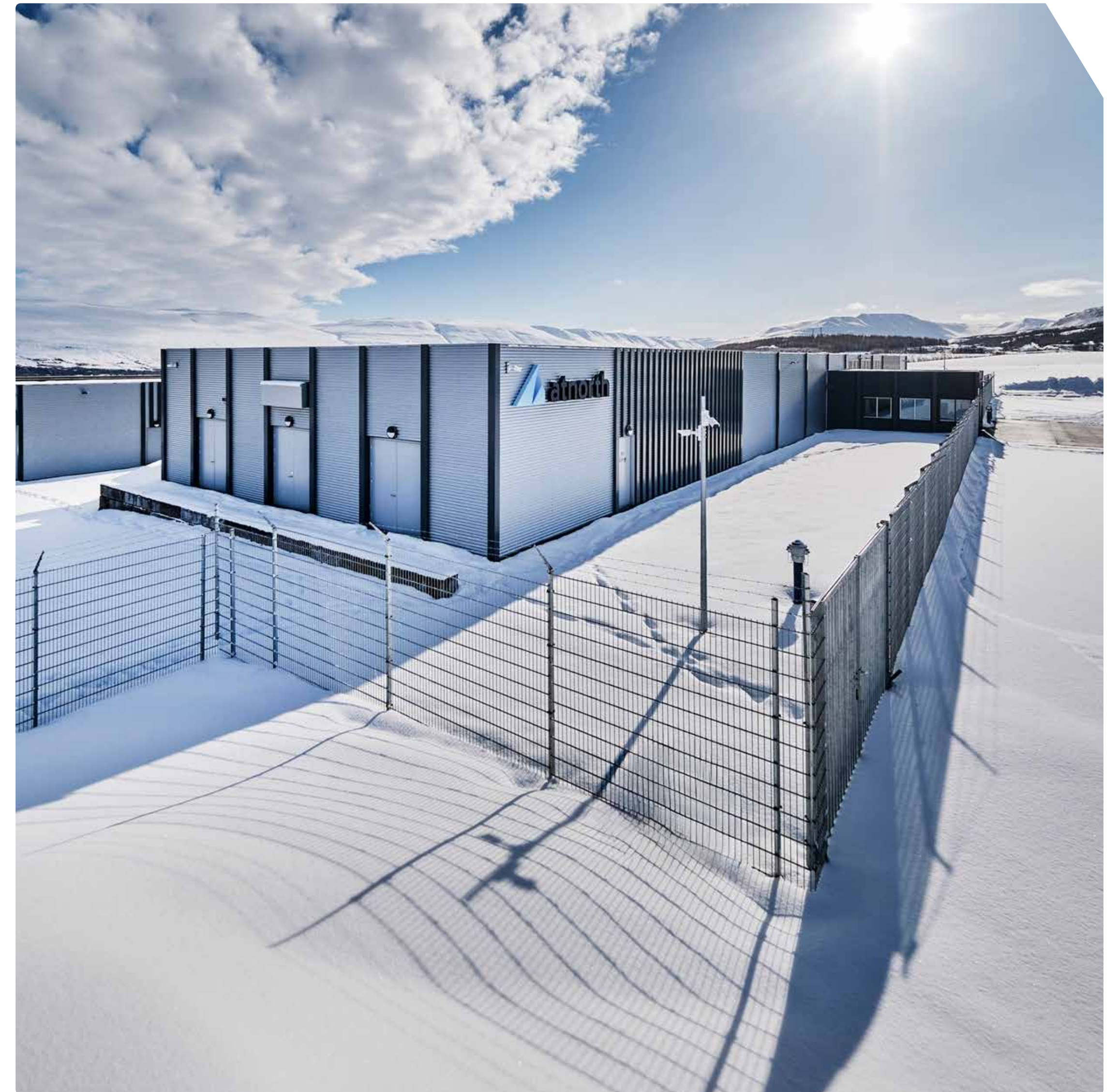
generation compute technology on an aggressive timeline, requiring both the right infrastructure and a partner capable of adapting in real time.

This created a shared challenge for the atNorth and QRT teams, with decisions made iteratively as the architecture developed. The result was a tailored solution that evolved alongside the project.

atNorth's responsive and flexible approach ensured the project ran smoothly, with delivery completed in just seven months from contract signing to operational launch.

The result was a fully customized HPC environment optimized for:

- **High-density compute performance**
- **Rapid scalability**
- **Operational resilience**



Sustainability supporting talent and growth

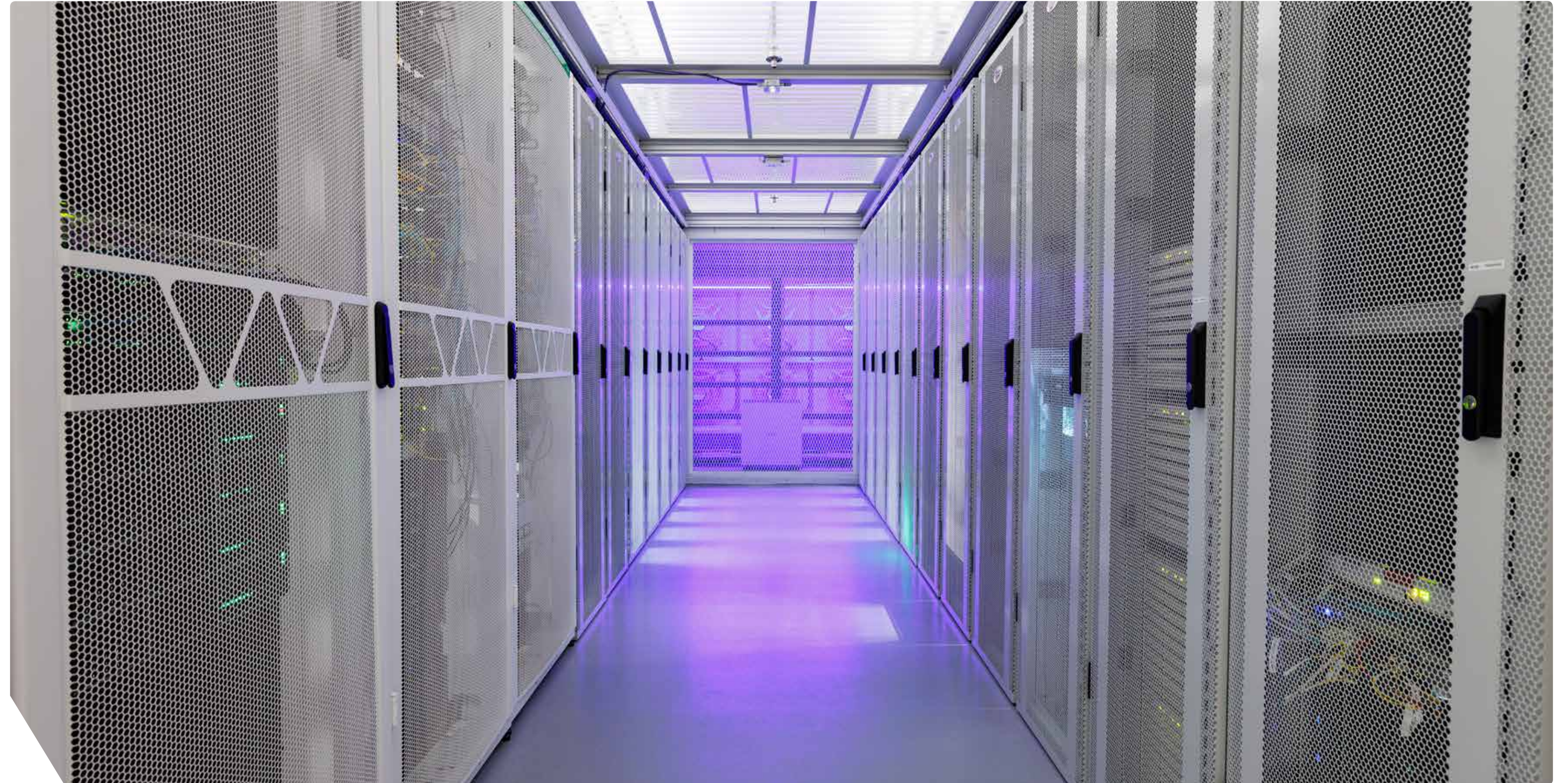
Operating from Iceland provides QRT with access to one of the world's cleanest energy systems. Electricity generation is sourced from renewables, primarily hydropower and geothermal energy, enabling QRT to run compute-intensive workloads with minimal carbon impact.

This results in an exceptionally low-carbon electricity grid, with an intensity of around 28 gCO₂/kWh, significantly lower than most European power systems.

[Iceland's naturally cool climate](#) allows data centers to use ambient air cooling, helping facilities achieve industry-leading Power Usage Effectiveness (PUE) levels as low as 1.05–1.2, significantly reducing energy overhead compared to traditional facilities.

For QRT, this sustainability profile supports both operational efficiency and corporate responsibility.

The partnership has supported local employment, with dedicated atNorth personnel supporting QRT's footprint at ICE03.



A partnership built on agility and trust

Delivering a complex, high-density HPC deployment within seven months required more than technical expertise, it required agility and mutual trust.

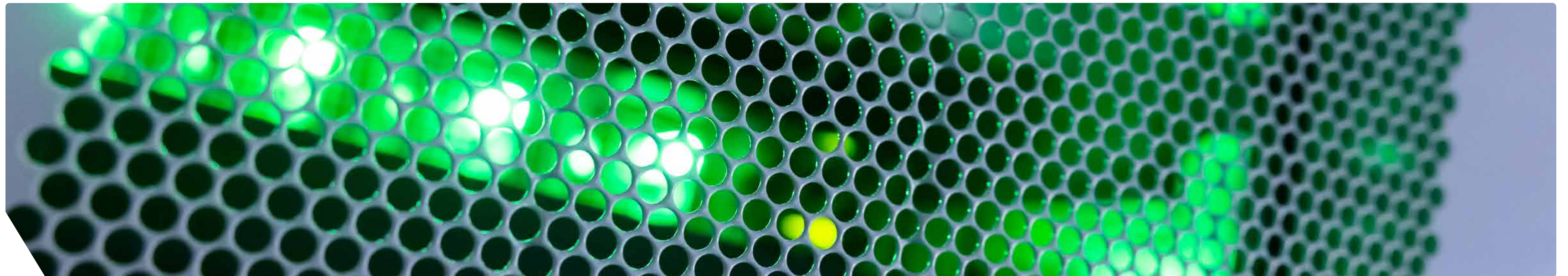
Design decisions evolved throughout the build as hardware specifications advanced. atNorth's flexible, solution-oriented approach ensured that progress continued while commercial and architectural considerations were refined in parallel.



Our priority was to enable QRT to deploy high-density compute at speed, without compromising on performance, resilience or sustainability. By working closely throughout the design and build process, we were able to deliver a highly customized HPC environment that supports both immediate performance needs and long-term growth.

Camilla O'Leary

Director of Client Management, atNorth



About atNorth

atNorth is the leading Nordic data center company that offers cost-effective, scalable high-density colocation and built-to-suit services trusted by industry-leading organizations. With sustainability at its core, atNorth's data centers run on renewable energy resources and support circular economy principles.

All atNorth sites leverage innovative design, power efficiency, and intelligent operations to provide long-term infrastructure and flexible colocation deployments. atNorth is headquartered in Reykjavik, Iceland and operates eight data centers in strategic locations across the Nordics, as well as a ninth under construction in Kouvola, Finland, a tenth site in Ølgod, Denmark and an eleventh campus in Stockholm, Sweden. The business has also announced a new mega-site development in the Sollefteå Municipality in Sweden.

Vision

More compute for a better world

Founded on sustainability and innovation, atNorth powers the world's most demanding workloads. We are the leading Nordic data center provider and the decarbonization partner of choice.

Mission

We are a disruptive force pushing boundaries to bring unmatched efficiency and performance to our customers.

Sustainability and social responsibility are at the core of what we do.

[atNorth.com](https://atnorth.com)

